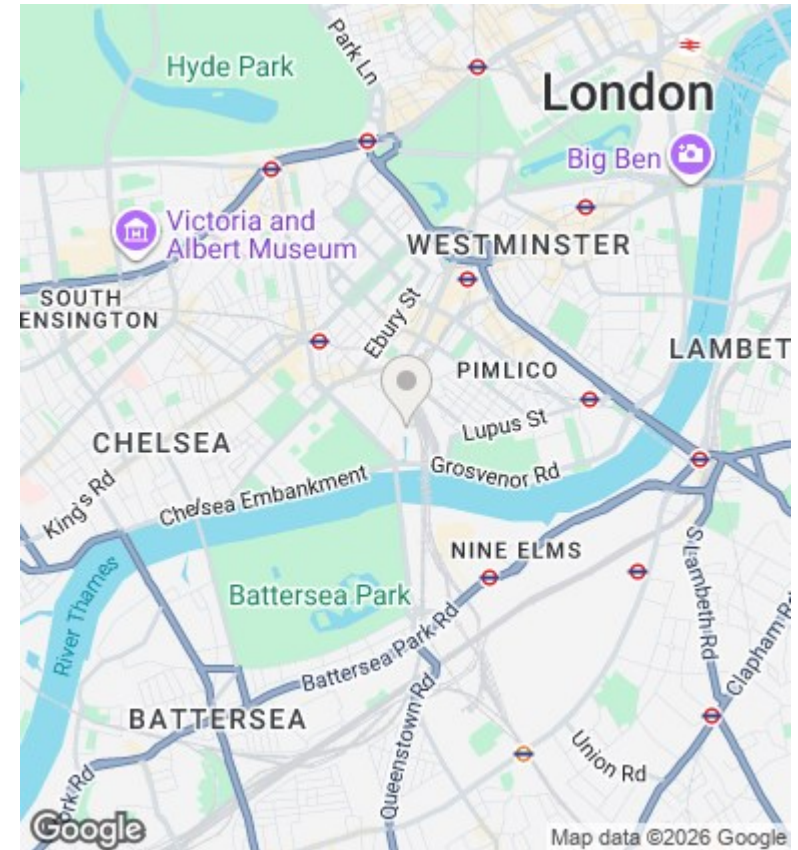
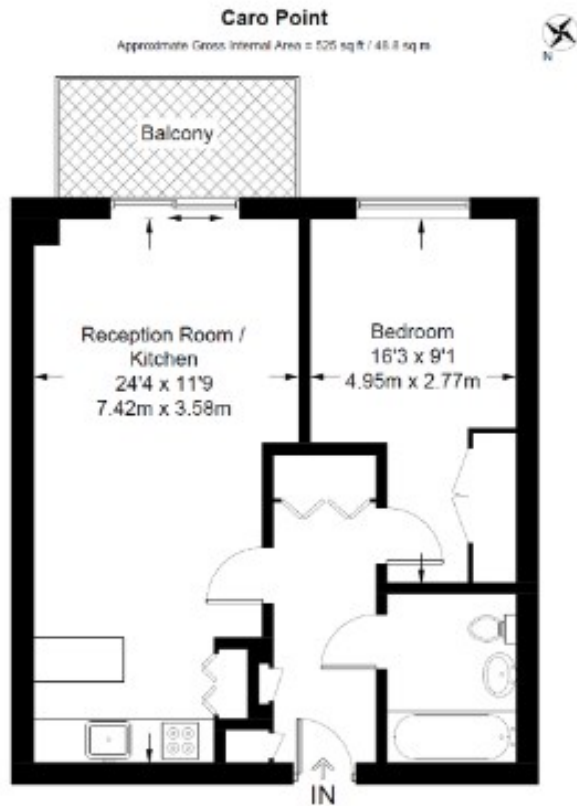




## Caro Point, Grosvenor Waterside, Gatliff Road, Sloane Square SW1W 8BD

Offers In Excess Of £575,000

- 24 hour concierge
- South East facing
- on site restaurant and food shop
- video viewing available
- gym and spa
- amazing views across London
- underfloor heating
- moments away from Sloane Square and Victoria



## Viewings

Viewings by arrangement only.  
Call 02077225022 to make an appointment.

## Council Tax Band

## EPC Rating:

B

Energy Efficiency Rating		
	Current	Potential
Very energy efficient - lower running costs		
(92 plus) <b>A</b>		
(81-91) <b>B</b>	83	83
(69-80) <b>C</b>		
(55-68) <b>D</b>		
(39-54) <b>E</b>		
(21-38) <b>F</b>		
(1-20) <b>G</b>		
Not energy efficient - higher running costs		
<b>England &amp; Wales</b>	EU Directive 2002/91/EC	